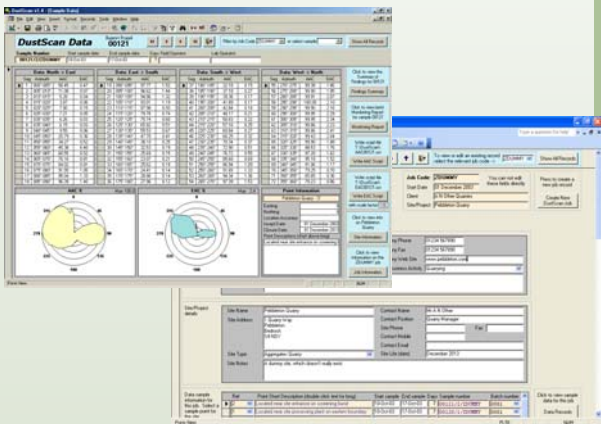


DustScan

Dust Management and Monitoring Services

Data Management

The volume and complexity of data generated from environmental monitoring can be challenging. Good data management should lead to sound interpretation and potential savings.



DustScan directional dust monitoring data is automatically stored in a comprehensive database. This enables a wide range of interpretation and presentation methods to be applied. The **DustScan** database allows stored data to be interrogated to extract specific information that previously would have taken much time to collate.

Database facilities

Every sample analysed is internally calibrated and approximately 150 000 data points are measured per sample. Dust levels are reported as AAC% and EAC% at 5° or 15° intervals around the monitoring point. Unlike simpler methods using hand-held reflectometers, **DustScan** is reliable, objective and repeatable.

Information can be added to the database to enable better understanding of dust generation and dispersion on a site specific basis.

Such data may be:

- Weather information
- Source locations
- Site activities
- Dust characteristics
- Dust properties

Potential benefits are:

- Evaluation of suppression measures
- Identification of potential dust sources
- Assessment of risk levels for dust generation
- Potential cost savings in site management

Griffin House, Market Street,
Charlbury, Oxford, OX7 3PJ, UK
Tel: (44) 1608 810110
Fax: (44) 1608 810227
Email: info@DustScan.co.uk
Web page: www.DustScan.co.uk